

# PE100 SAMPLE VALVE

# FLOWTREN D

SMARTER, FASTER FLUID HANDLING SOLUTIONS

## Replaces the Perlick® Sample Valve

Designed for sanitary sampling applications, the entire valve is autoclaveable and able to withstand high temperatures. The interior of the valve is designed with a smooth surface which not only makes it easy to clean but also improves the flow through the valve.

## Suitable For

Sampling applications where high temperatures are needed for sterilization.

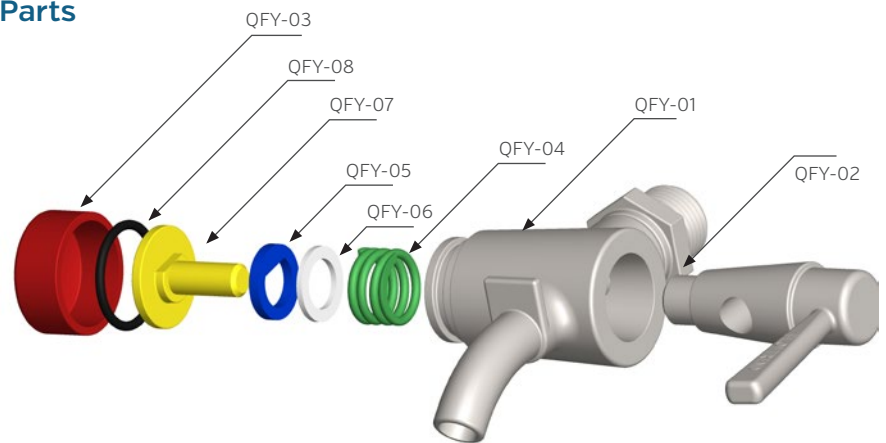
## Features

- Zero leakage in liquid applications up to 30 psig
- Materials FDA approved\*
- 316SS Construction
- Autoclaveable
- Swickle connection
- Withstands high temperatures [300°F+]
- Standard stock item

## Material Grades

- 316 SS

## Parts



ITEM #	KEY #	QTY	DESCRIPTION
PEQFY-01	QFY-01	1	Valve Body (Cannot be ordered individually)
PEQFY-02	QFY-02	1	Valve Plug (Cannot be ordered individually)
PEQFY-03	QFY-03	1	Cover
PEQFY-04	QFY-04	1	Spring
PEQFY-05	QFY-05	1	SS Washer
PEQFY-06	QFY-06	1	PTFE Washer
PEQFY-07	QFY-07	1	Screw
PEQFY-08	QFY-08	1	O-Ring
PERK-01		1	Repair Kit (Includes Spring, PTFE Washer & Screw)

Flowtrend, Inc. is not associated with, nor a distributor for, any of these manufacturers. Any name, brand, model or part number is for descriptive purposes only. Our components will fit other manufacturer's pumps and carry the OEM warranty. Perlick is a Registered Trademark of Perlick Corporation.  
\*Not intended for use in dairy plants.

11512 SPACE CENTER BLVD, HOUSTON TEXAS 77059  
P +1 281 990 8582 F +1 281 990 8644

WWW.FLOWTREN D.COM

