

PE100 SAMPLE VALVE

FLOWTREN D

SMARTER, FASTER FLUID HANDLING SOLUTIONS

Replaces the Perlick® Sample Valve

Designed for sanitary sampling applications, the entire valve is autoclaveable and able to withstand high temperatures. The interior of the valve is designed with a smooth surface which not only makes it easy to clean but also improves the flow through the valve.

Suitable For

Sampling applications where high temperatures are needed for sterilization.

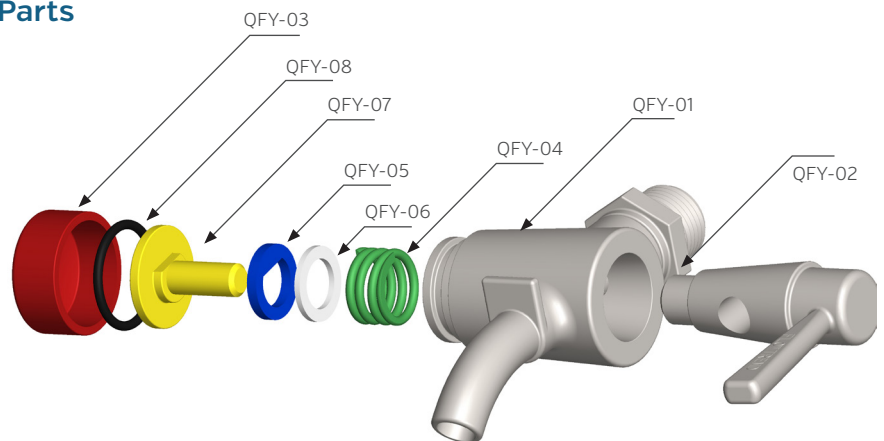
Features

- Zero leakage in liquid applications up to 30 psig
- Materials FDA approved*
- 316SS Construction
- Autoclaveable
- Swickle connection
- Withstands high temperatures (300°F+)
- Standard stock item

Material Grades

- 316 SS

Parts



ITEM #	KEY #	QTY	DESCRIPTION
PEQFY-01	QFY-01	1	Valve Body [Cannot be ordered individually]
PEQFY-02	QFY-02	1	Valve Plug [Cannot be ordered individually]
PEQFY-03	QFY-03	1	Cover
PEQFY-04	QFY-04	1	Spring
PEQFY-05	QFY-05	1	SS Washer
PEQFY-06	QFY-06	1	PTFE Washer
PEQFY-07	QFY-07	1	Screw
PEQFY-08	QFY-08	1	O-Ring
PERK-01		1	Repair Kit [Includes Spring, PTFE Washer, Screw & O-Ring]

Flowtrend, Inc. is not associated with this manufacturer. Perlick is a Registered Trademark of Perlick Corporation.

*Not intended for use in dairy plants.

11512 SPACE CENTER BLVD, HOUSTON TEXAS 77059

P +1 281 990 8582 F +1 281 990 8644

WWW.FLOWTREN D.COM