

FLOWTREND

SMARTER, FASTER FLUID HANDLING SOLUTIONS

EDF SHUTTER CHECK VALVES. MAGNETIC TECHNOLOGY.

Captured Seat

Fully Hygienic Design

Reduced Maintenance



3-A Certification
Authorization #: 3414

FLOWTREND IS THE EXCLUSIVE AMERICAN DISTRIBUTOR OF YGROS VALVES

YGROS technology sets new standards for check valves, thanks to a patented magnetic principle which replaces the conventional spring, guide plate and stem

FEATURES & BENEFITS

No Spring, Guide plate, or stem in product zone

- No maintenance as a result of broken or jammed spring
- Springless design allows for use in corrosive areas (brine systems, etc.)
- Precision machining from bar stock insures Superior Hygienic Design
- Shutter guides insure proper seating
- Reduced parts and shutter “wings” insure laminar vs. turbulent flow

Retained Seat

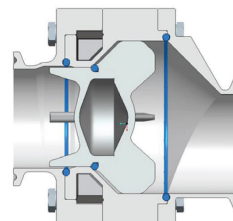
- Prevents product contamination caused by seat loss in product
- Prevents valve failure as a result of seat loss
- Allows for PTFE seat which will extend service life [less maintenance]
- Unlike “friction” fit O-Ring/V-Ring seats, the “compression” fit insures the seat does not separate from the shutter and enter the product.

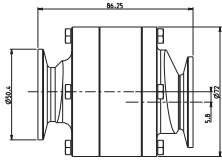
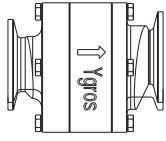
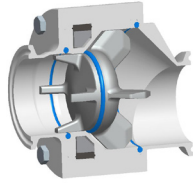
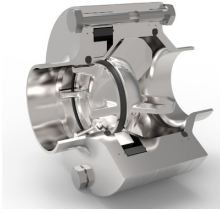
Bolts vs. clamp

Controlled Compression prevents over torque of clamp which cause gaskets or profiled O-rings to deform and enter product stream.

Technical Information

- Sizes: ½” – 6”
- Connections: US Clamp and Weld. DIN Clamp and Weld
- Option: Eccentric body for Horizontal Installation
- Materials: Body = 316L Stainless Steel; Shutter = Duplex Stainless Steel
 - Optional materials available
- Seal Materials: Available in EPDM, FPM, Silicone, PTFE
- Polish: 32Ra is standard.
 - Optional polishes available
- Temp Range: -40C [-40F] to 150C [302F] in standard version
- Max Product Pressure: 300 psi
- All product contact materials and seals are fully traceable
- Suitable for CIP/SIP





Vertical Configuration

SIZE	EDF WELD	EDF CLAMP
.50"	51mm [2.01"]	61mm [2.40"]
.75"	60mm [2.36"]	70mm [2.76"]
1.0"	72mm [2.83"]	77mm [3.03"]
1.5"	88mm [3.46"]	88mm [3.46"]
2.0"	98mm [3.86"]	98mm [3.86"]
2.5"	115mm [4.43"]	118mm [4.65"]
3.0"	140mm [5.51"]	145mm [5.71"]
4.0"	150mm [5.91"]	155mm [6.10"]

Horizontal Configuration

SIZE	EDF WELD	EDF CLAMP
.50"	51mm [2.01"]	61mm [2.40"]
.75"	60mm [2.36"]	70mm [2.76"]
1.0"	72mm [2.83"]	77mm [3.03"]
1.5"	88mm [3.46"]	88mm [3.46"]
2.0"	98mm [3.86"]	98mm [3.86"]
2.5"	115mm [4.43"]	118mm [4.65"]
3.0"	140mm [5.51"]	145mm [5.71"]
4.0"	150mm [5.91"]	155mm [6.10"]

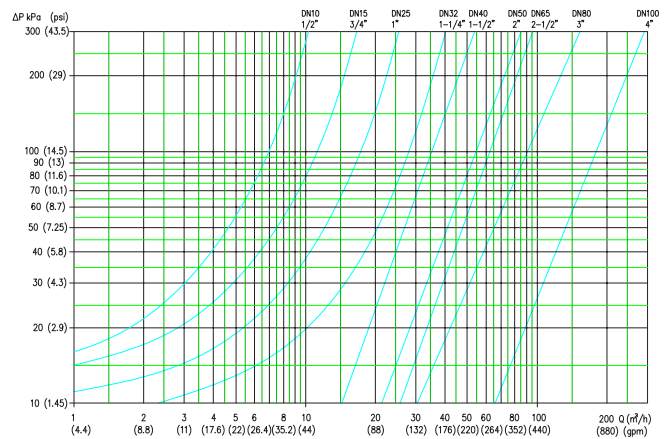
Part Number Build Example

Completed PN: EDF-3A-CL-3.0-E-316

E	3A	CL	3.0	E	316		
TYPE	POLISH	CONFIG	CONNECTION	SIZE	SEAT MTRL	BODY MTRL	SPECIAL
E=EDF	3A=32Ra	(blank) = vertical	CL=Clamp	.50"	E=EPDM	316=316L	P = Port to Port Dimension change
	ID=32Ra on ID only	H=horizontal	W=Weld	.75"	V=FKM		P1 = LK
			CW = Clamp x Weld	1.0"	S=Silicone		P2 = DE
				1.5"	H=HNBR		D = Demo
				2.0"	P=PTFE		O = Other
				2.5"	P=PTFE		
				3.0"			
				4.0"			

Pressure Drop Diagram

Based on water at 20C [68F]



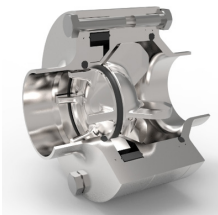
DN15 = 1/2" DN40 = 1 1/2" DN65 = 2 1/2" DN100 = 4"
 DN25 = 1" DN50 = 2" DN80 = 3"

YGROS EDF

STANDARD OPENING PRESSURES

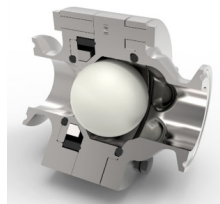
INSTALLATION	FLOW DIRECTION	OPENING PRESSURE
Horizontal Lines		0.44 / 0.73 psi
Vertical Lines	Bottom to Top	0.48 / 0.80 psi

The Complete Family of Magnetic Check Valves



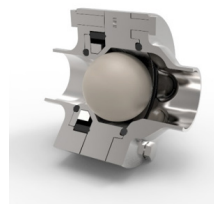
EDF

For dairy, food, beverage, brewery, pharmaceutical, cosmetic.



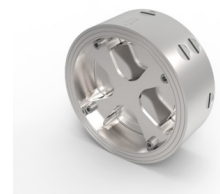
Pharma Ball

For handling of aggressive media and chemicals utilizing Duplex SS & PVDF.



Aggro Ball

For critical applications in the pharmaceutical industry. Made in Duplex SS & PVDF.



For water treatment, vacuum, & Gas.

P +1 281 990 8582 F +1 281 990 8644
www.flowtrend.com

YouTube Videos available

FLOWTREND | YGROS VALVES